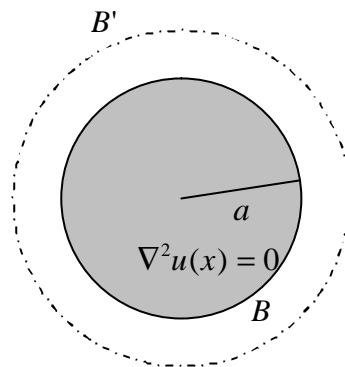


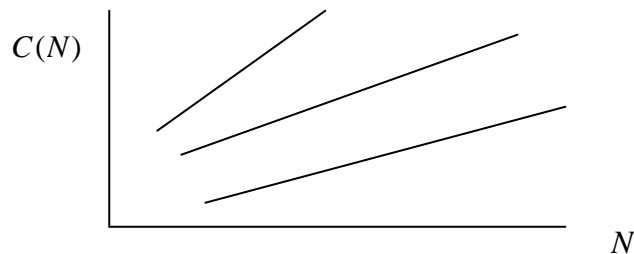
程式 46 十八般武藝比較

Equivalence of different BEMs using circulantants



1. Direct method - UT formulation
2. Direct method - LM formulation
3. Indirect method - UL(B) formulation
4. Indirect method - TM(B) formulation
5. Indirect method - UL(B') formulation
6. Indirect method - TM(B') formulation
7. Null-field equation method - UT formulation
8. Null-field equation method - LM formulation
9. Trefftz method
10. Method of fundamental solution

Plot condition number versus N



C - Condition Number

N - Numbers of Elements

References

1. S.R. Kuo, J.T. Chen and C.X. Huang, Analytical study and numerical experiments for true and spurious eigensolutions of a circular cavity using the real-part BEM, Int. J. Numer. Meth. Engng, Vol.48, pp.1401-1422, 2000.
2. G. Fairweather and R.L. Johnston, The method of fundamental solutions for problems in potential theory, in Treatment of Integral Equations by Numerical Methods, edited by T.H. Baker and F. Miller, Academic Press, London, UK, 1982.