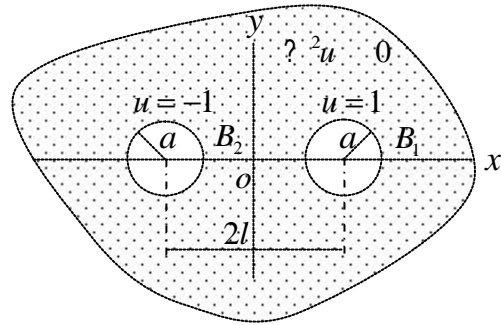
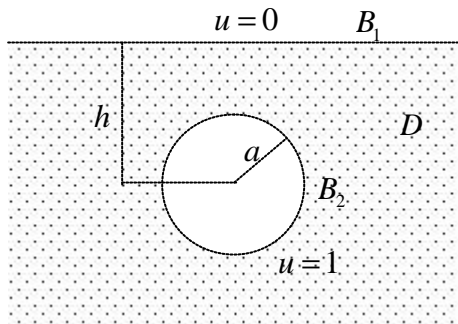


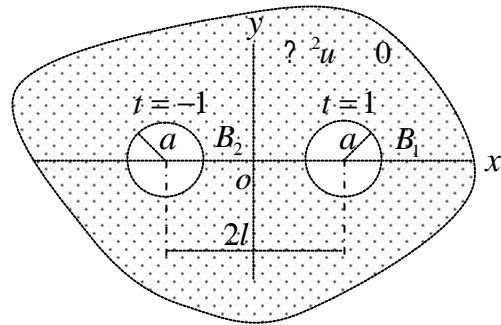
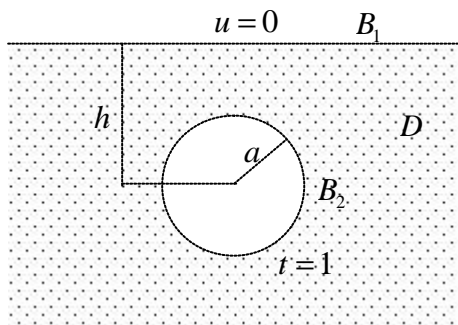
程式 97 半平面與全平面含圓洞問題

Governing equation: $\nabla^2 u = 0$

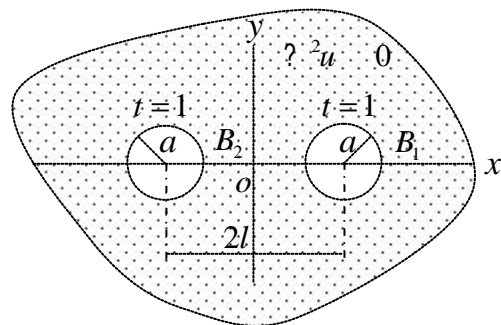
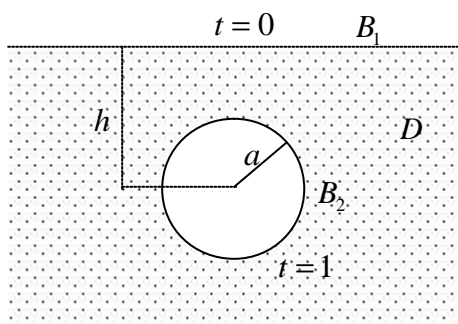
Dirichlet



Mixed-type



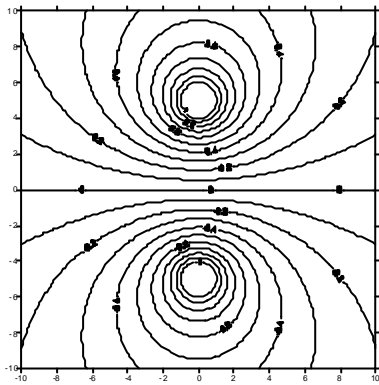
Neumann



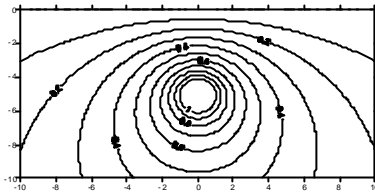
Half-plane with a circular hole

Infinite plane with two circular holes

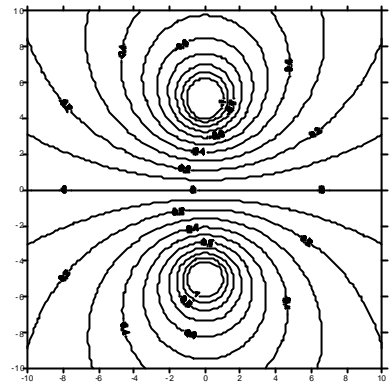
Dirichlet



Analytical solution

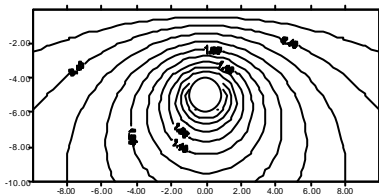


Half-plane with a circular hole

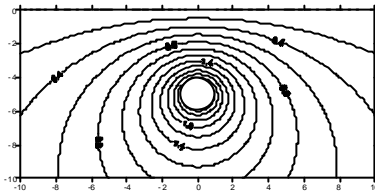


Infinite plane with two circular holes

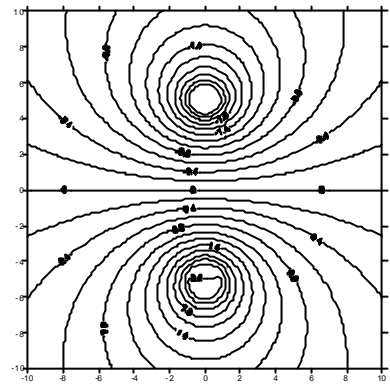
Mixed-type



Analytical solution



Half-plane with a circular hole

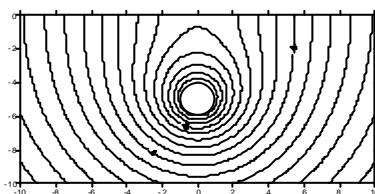


Infinite plane with two circular holes

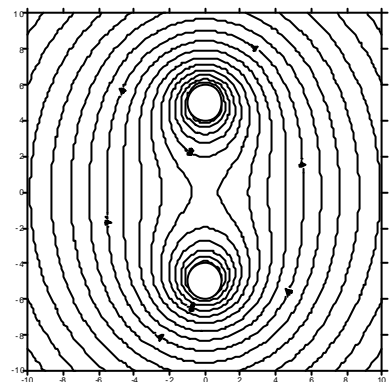
Neumann

NA

Analytical solution



Half-plane with a circular hole



Infinite plane with two circular holes

Reference

1. N.N. Lebedev, I.P. Skalskaya and Y.S. Uyand, Worked problem in applied mathematics, Dover, New York, 1979.