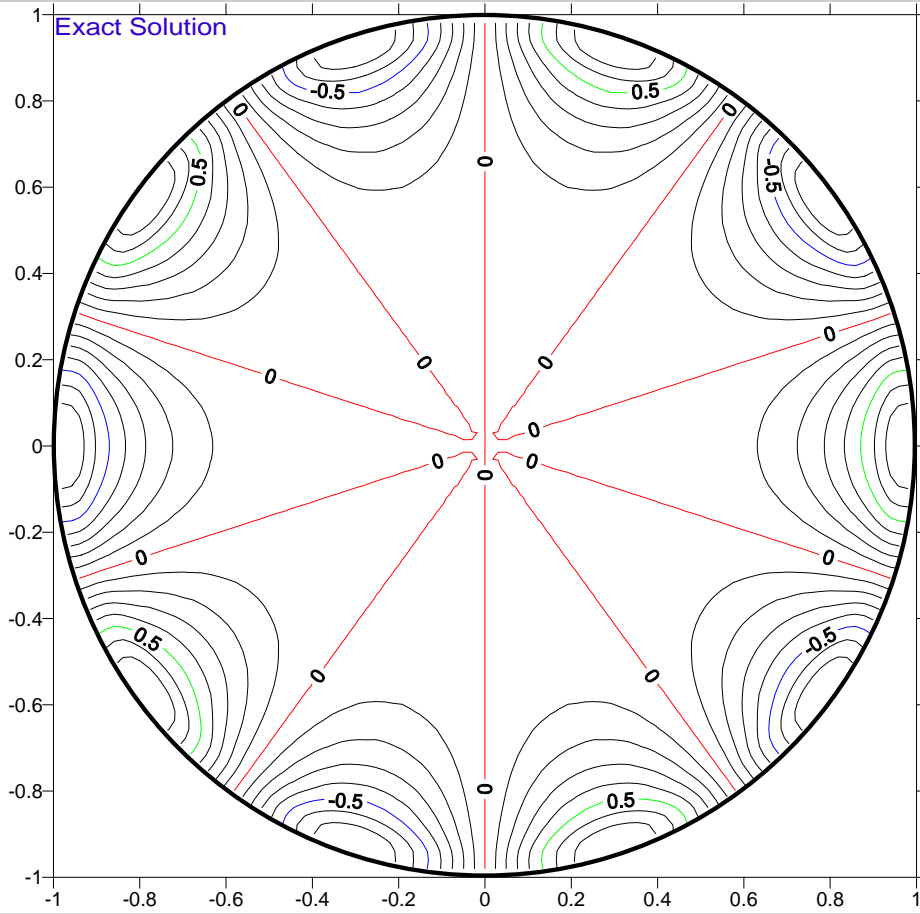
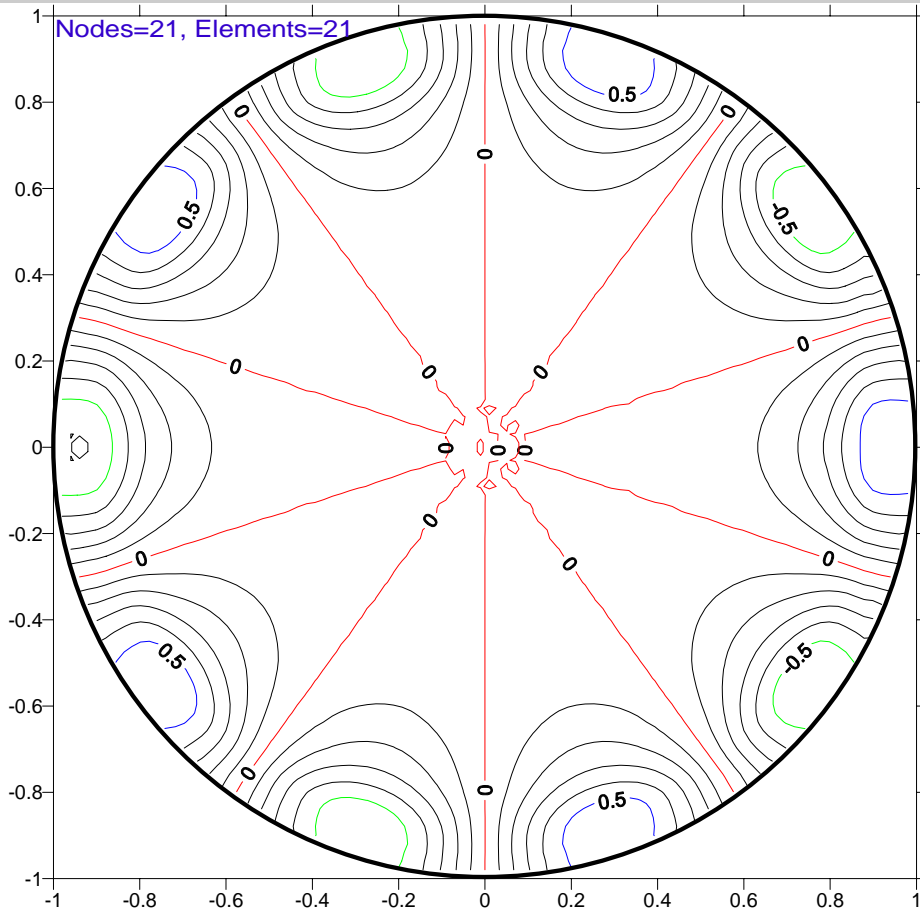
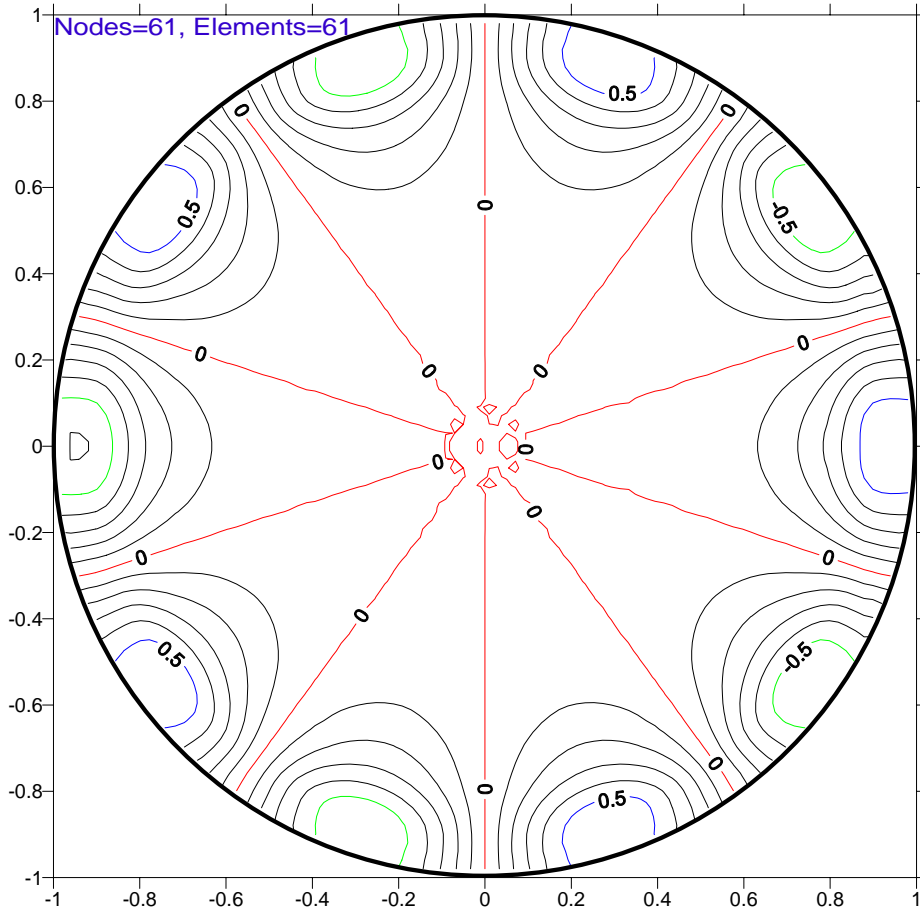
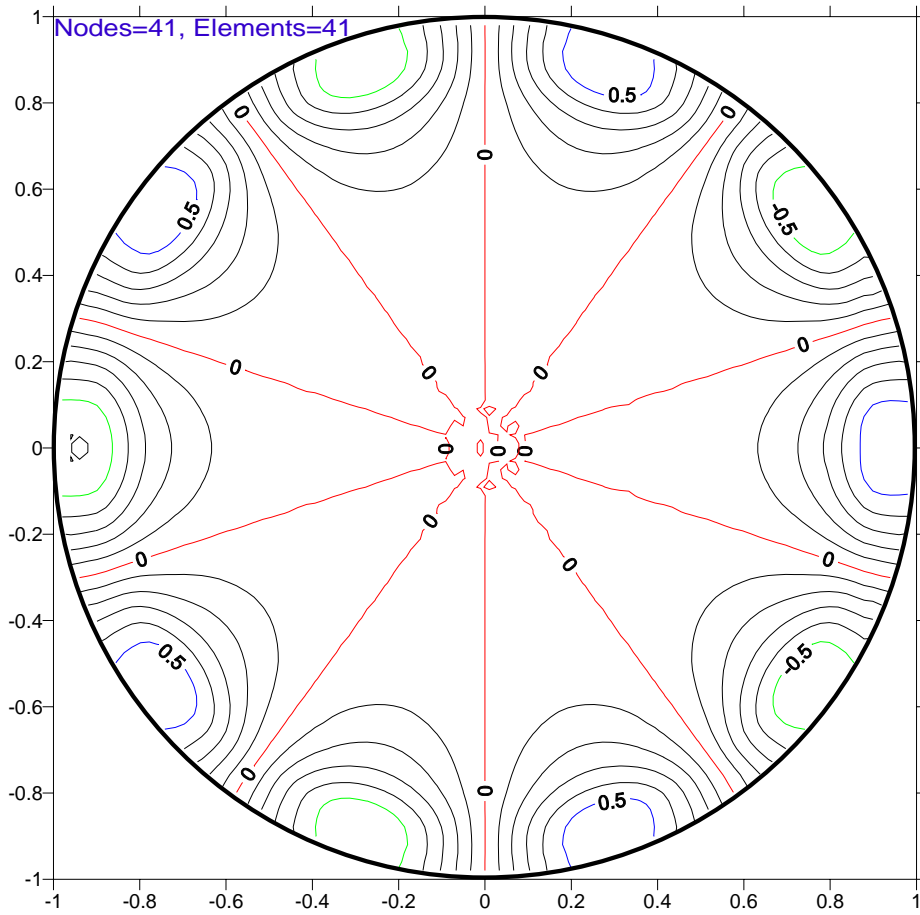


### Exact Solution



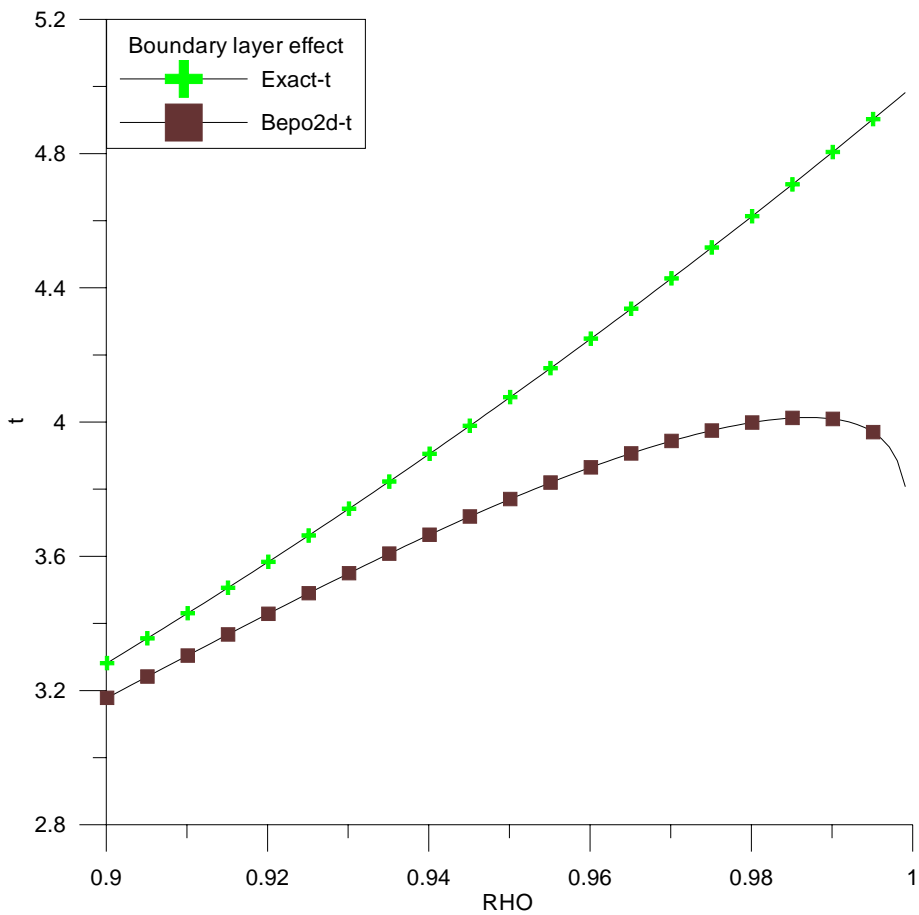
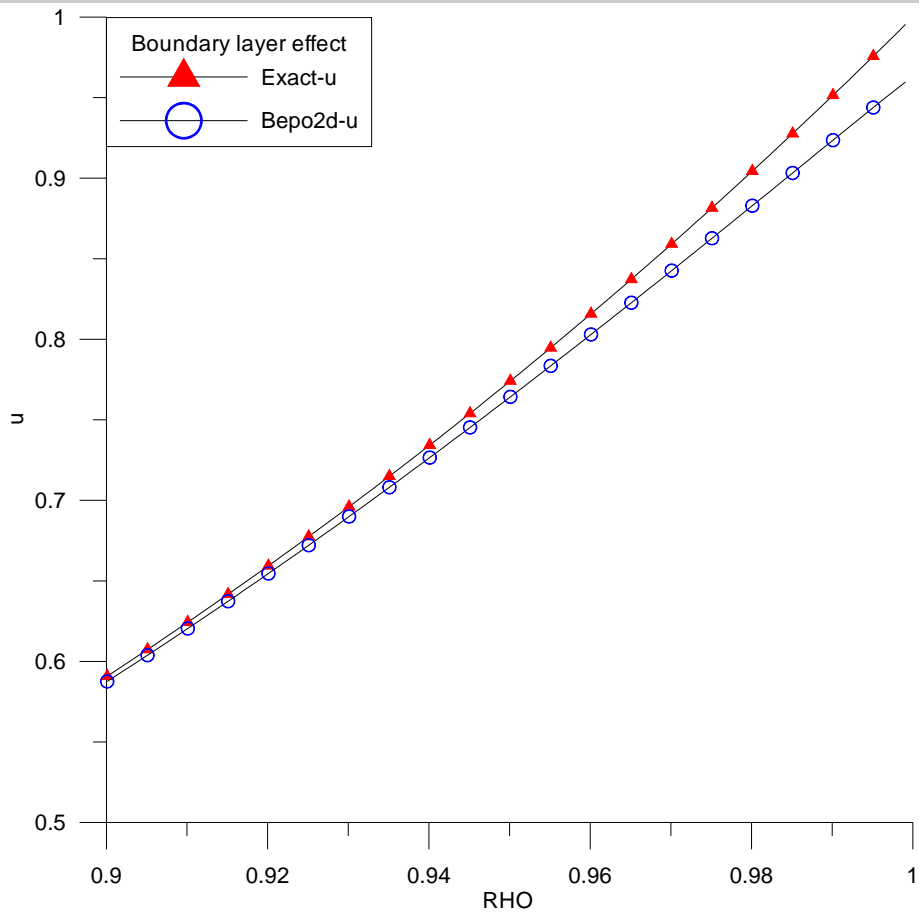
### Bepo2d





More nodes and elements won't increase the accuracy.

Boundary Layer Effect (100 Points between 0.9~1.0 at  $\phi=0$ )  
Bepo2d (Nodes=41, Elements=41)



Boundary Layer Effect (100 Points between 0.9~1.0 at  $\phi = \pi/2$ )  
 Bepo2d (Nodes=41, Elements=41)

