

# Application of Cesàro mean and the L-curve for the deconvolution problem

L. Y. Chen

*Department of Civil Engineering, Kao Yuan Jr. College of Technology and Commerce, Taiwan*

J. T. Chen\*

*Department of Harbor and River Engineering, National Taiwan Ocean University, Keelung, Taiwan*

&

H.-K. Hong & C. H. Chen

*Department of Civil Engineering, National Taiwan University, Taipei, Taiwan*

(Received 15 September 1994; accepted 5 December, 1994)

In this paper, the Cesàro mean technique is applied to regularize the divergent problem which occurs in ground motion deconvolution analysis in geotechnical engineering. To deal with this ill-posed problem, we use the corner of the L-curve as the compromise point to determine the optimal order of Cesàro mean so that the high frequency content can be suppressed instead of engineering judgement using the concept of a cutoff frequency. The fractional order of Cesàro mean has been derived and used to fulfill this purpose. From the examples shown, it is found that the wave form including maximum acceleration can be accurately predicted and that both the high frequency content and divergent results can be avoided by using the proposed regularization technique.

*Key words:* Cesàro mean, L curve, deconvolution

## NOTATION

$a_n$	the $n$ th term of series	$\bar{T}(f)$	traction on the ground surface in the frequency domain
$A(f)$	Amplitude of transfer function	$u$	displacement
$C(k, r)$	Cesàro mean operator of order $r$ with $k$ terms	$u_g(t)$	displacement of the ground surface
$C_k^r$	binomial coefficient	$\bar{u}_g(t)$	contaminated displacement of the ground surface
$f$	exciting frequency	$u_b(t)$	displacement of the basement
$f_n$	$n$ th frequency in the Fourier transform	$\bar{u}_b(t)$	calculated displacement deconvoluted from $\bar{u}_g(t)$
$H_s$	thickness of soil layer	$U_b(f)$	Fourier coefficient of $u_b$
$K_s^*$	complex wave number	$U_g(f)$	Fourier coefficient of $u_g$
$K_N(t-\tau)$	reproducing kernel (Fejer kernel)	$U(f)$	Fourier coefficient of $u$
$N$	total number in Fourier transform	$V_s$	shear wave velocity of the soil layer
$r$	order of Cesàro mean	$w_i^r$	$i$ th weight of Cesàro mean with $r$ order
$S_n$	partial sum	$\Gamma(x)$	Gamma function of $x$
$t$	time	$\xi_s$	hysteretic damping ratio of the soil layer
$T_{bg}(f)$	transfer function of deconvolution		
$T_{gb}(f)$	transfer function of convolution		
$T(t)$	traction on the ground surface in the time domain		

## 1. INTRODUCTION

Inverse problems are presently becoming more important in many fields of science and engineering. The deconvolution problem can be seen as one inverse

\* Correspondence to J. T. Chen.

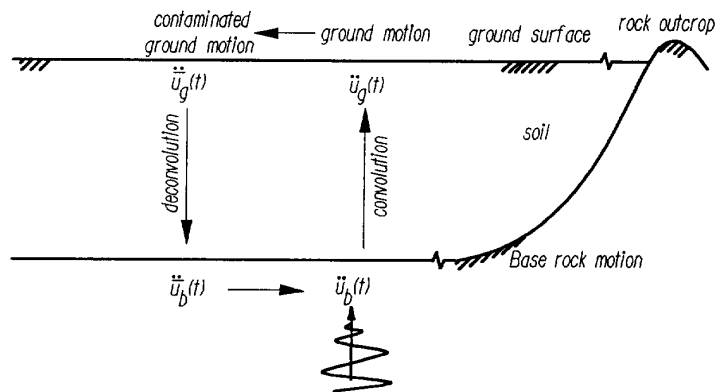


Fig. 1. Single layer soil model.

problem. Sometimes, unreasonable results occur in deconvolution analysis due to the damping mechanism and contaminated errors in the input motion. For example, the SHAKE program<sup>7</sup> has too much high frequency response, and in some cases divergent results, in deconvolution analysis as mentioned by Chen.<sup>1</sup> Mathematically speaking, the deconvolution problem is ill-posed since the solution is very sensitive to the given data. This phenomenon will become more serious when either the deconvolution depth is deeper or the damping ratio is larger. Although the damping model of soils is not clearly understood, it is always assumed to be hysteretic damping in engineering practice. This paper focuses on a treatment for divergence due to noise. The material properties are assumed to be known, i.e. the source identification is considered instead of system parameter identification. Such a divergent problem could be avoided by using a cutoff frequency in the SHAKE program or using by regularization methods. The former method utilizes a rectangular window to eliminate all the high frequency contents larger than the cutoff frequency. Nevertheless, how to choose a suitable cutoff frequency depends on the engineering judgement in engineering practice. Furthermore, the side lobe of the rectangular window is large. To find an optimum window with a general rule is a key step in solving such problems. The regularization techniques have been successfully

applied to circumvent the influence of noise. For example, three regularization techniques have been applied to direct problems by Chen and Hong<sup>2-5</sup> when the solution is contaminated with noise. The three methods can effectively suppress noise propagation.

In this paper, we shall employ one of the regularization methods, the Cesàro regularization technique,<sup>8</sup> to circumvent the ill-posed problem. In other words, an optimum Cesàro window will be introduced. The Cesàro window can redistribute the amplitude of frequency content in the system kernel; therefore, an ill-posed problem can be transformed into a well-posed one by choosing the appropriate order of the Cesàro mean. The appropriate order is determined according to the compromise between regularization error (due to data smoothing) and perturbation error (due to noise disturbance).<sup>9</sup> The corner of the L-curve can provide the compromise point and will be elaborated on later. Finally, two examples, single layer soil with artificial noises and multiple layer soils at the LSST site in Lotung, Taiwan with measured data, will be shown to illustrate the validity of the proposed technique.

## 2. FORMULATION OF THE DECONVOLUTION PROBLEM

In general, the deconvolution problem can be described

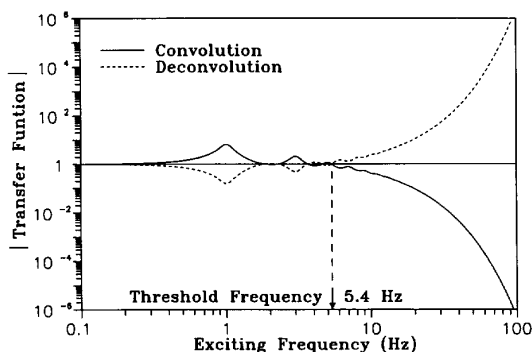


Fig. 2. Transfer functions of convolution and deconvolution.

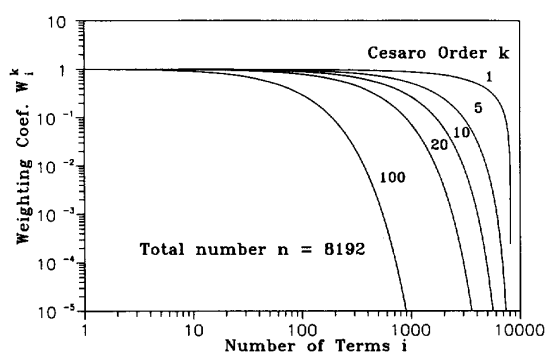


Fig. 3. Cesàro window function.

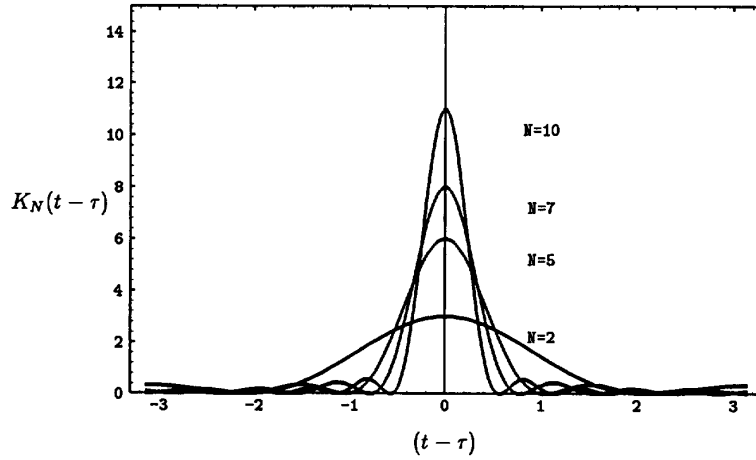


Fig. 4. The reproducing kernel for increasing number  $N$ .

as shown in Fig. 1, where the boundary condition of traction  $T(t)$  and displacement  $u(t)$  in the time domain or  $\bar{T}(f)$  and  $U(f)$  in the frequency domain are prescribed over the surface of the ground, but the stress and displacement fields under the ground surface are both unknown.

Conventionally, as used in SHAKE analysis, deconvolution analysis is performed in the frequency domain. We can formulate the associated transfer function to investigate the problem of high frequency divergency of this analysis. As a simple example but without loss

of its generality, a homogeneous soil layer underlain by a horizontally extended basement can be used. It is assumed that the soil is linearly elastic with damping of the hysteretic type. For a SH wave vertically propagating in the soil layer, the frequency domain transfer function between the surface motion and basement motion in the frequency domain can be derived and represented as

$$T_{gb}(f) = \frac{U_g(f)}{U_b(f)} \tag{1}$$

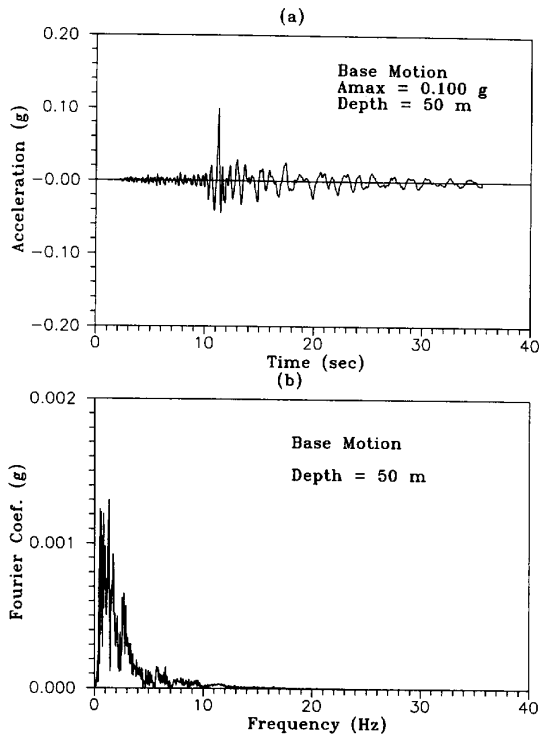


Fig. 5. The original input motion given at the basement level. (a) Time history. (b) Fourier coefficient spectrum.

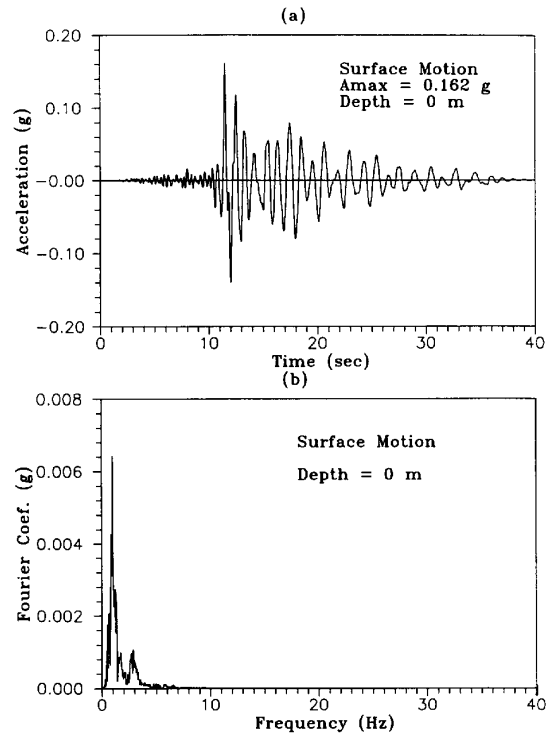


Fig. 6. Ground surface motion convoluted from the given basement motion. (a) Time history. (b) Fourier coefficient spectrum.

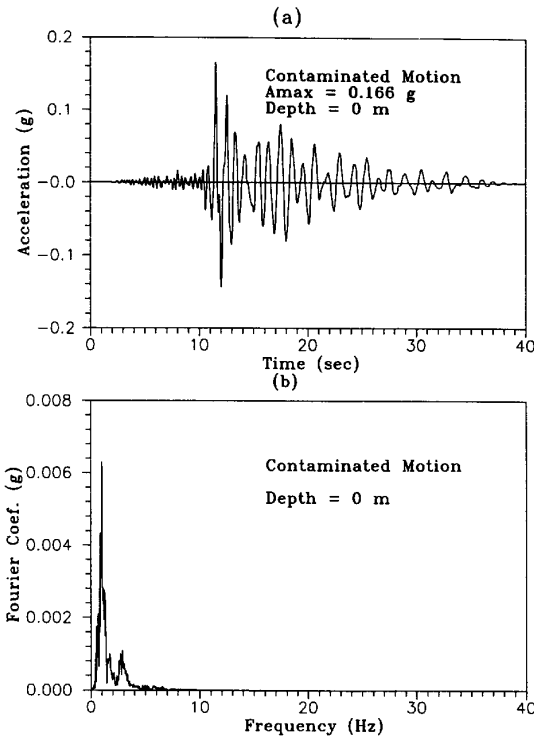


Fig. 7. Contaminated ground surface motion. (a) Time history. (b) Fourier coefficient spectrum.

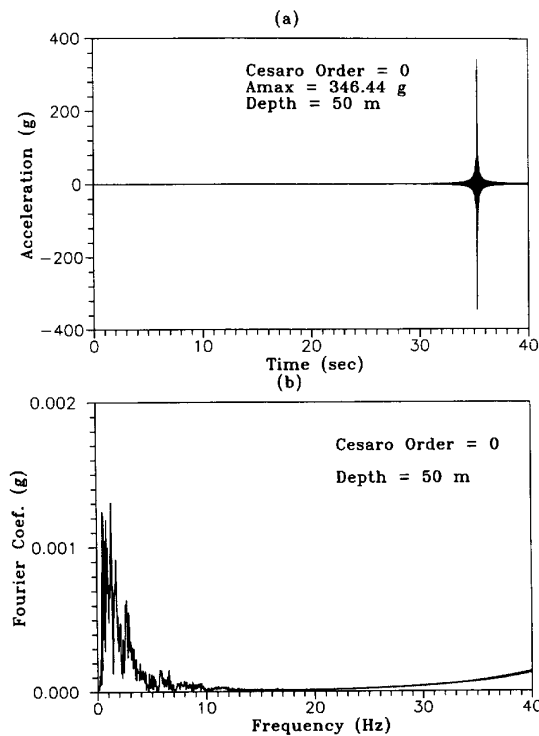


Fig. 8. Basement motion without using regularization deconvoluted from the contaminated ground surface motion. (a) Time history. (b) Fourier coefficient spectrum.

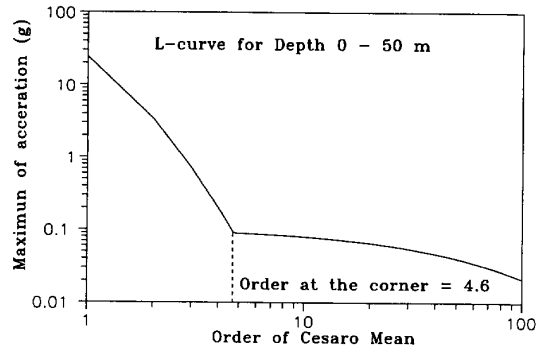


Fig. 9. The constructed L-curve of a single layer example.

or

$$T_{gb}(f) = \frac{1}{\cos(K_s^* H_s)} \quad (2)$$

The amplitude function is defined by

$$A_{gb}(f) = |T_{gb}(f)| \quad (3)$$

In the above equation,  $H_s$  is the thickness of the soil layer, and  $K_s^*$  is the complex wave number expressed by

$$K_s^* = \frac{2\pi f}{V_s} (1 + 2i\xi_s)^{-1/2} \quad (4)$$

where  $V_s$  is the shear wave velocity of soil,  $\xi_s$  is the hysteretic damping ratio of soil, and  $f$  is the frequency of ground excitation.

From eqns (1)–(3), it is seen that  $T_{gb}$  depends on the material properties and exciting frequency. When  $U_b(f)$  is given, the ground surface response,  $U_g(f)$ , can be calculated accordingly. This procedure is usually called the ‘convolution process’, and  $T_{gb}(f)$  is ‘the transfer function of convolution of the soil layer’.

On the other hand, the transfer function of deconvolution can be defined as

$$T_{bg}(f) = \frac{U_b(f)}{U_g(f)} \quad (5)$$

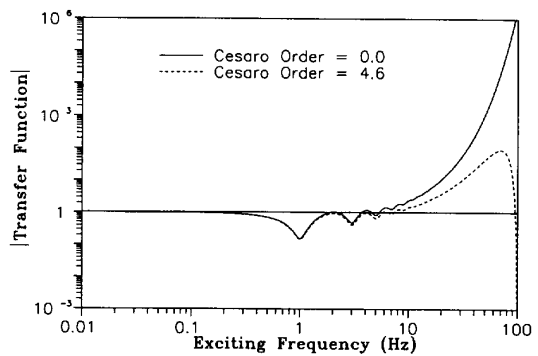


Fig. 10. Suppressed transfer function of Cesàro order 4.6.

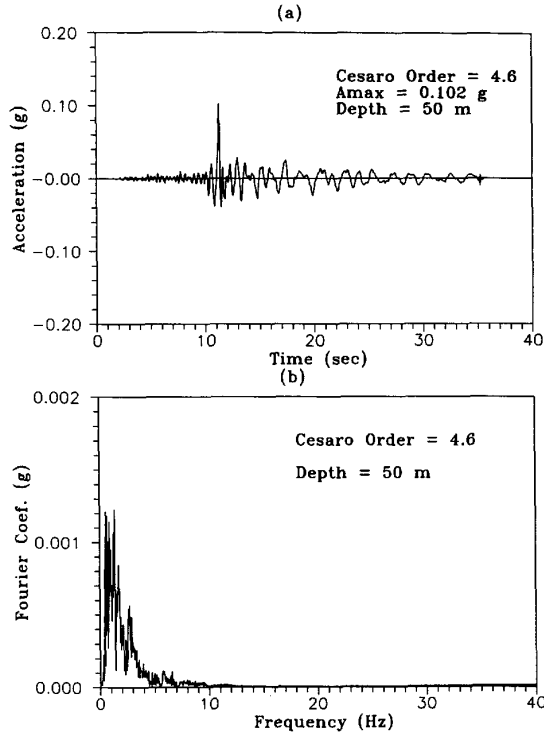


Fig. 11. Basement motion deconvoluted from the contaminated ground surface motion by using Cesàro regularization. (a) Time history. (b) Fourier coefficient spectrum.

or

$$T_{bg}(f) = \cos(K_s^* H_s). \quad (6)$$

The amplitude function is defined by

$$A_{bg}(f) = |T_{bg}(f)|. \quad (7)$$

When  $U_g(f)$  is given, the basement motion,  $U_b(f)$ , can be calculated by

$$U_b(f) = U_g(f) \cos(K_s^* H_s) \quad (8)$$

and the time domain response,  $u_b(t)$ , can be obtained by

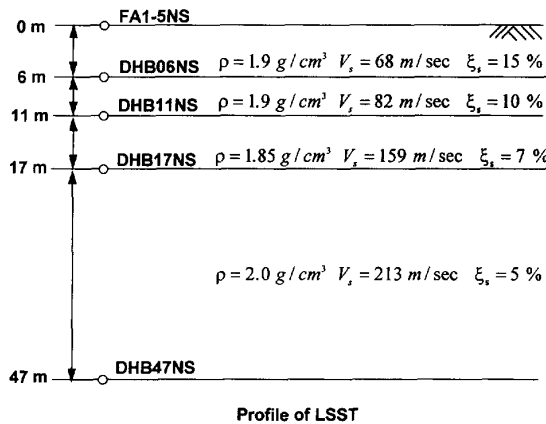


Fig. 12. Soil profile of the far-field at the LSST site.

Fourier transform represented by

$$u_b(t) = \sum_{n=-\infty}^{\infty} U_b(f_n) e^{i2\pi f_n t}. \quad (9)$$

In practical calculation, only the finite length of summation is taken, represented by

$$u_b(t) = \sum_{n=-N}^N U_b(f_n) e^{i2\pi f_n t}. \quad (10)$$

Comparing eqn (1) with (5), it can be seen that  $T_{gb}$  is the inverse of  $T_{bg}$ . A typical relationship of their amplitude vs frequency is shown in Fig. 2. The amplitude of convolution transfer function is greater than 1.0 in the low frequency range and decreases rapidly as the frequency becomes higher. On the other hand, the amplitude of deconvolution transfer function is lower than 1.0 in the low frequency range and becomes very large as the frequency becomes higher. Chen *et al.*<sup>10</sup> defined the least frequency which makes the amplitude of deconvolution transfer function always larger than one as the threshold frequency, shown in Fig. 2. Since the transfer function of convolution analysis has confined values, no serious errors will occur when the input motion is contaminated with noise. However, the deconvolution transfer function has very high amplitudes in the range where the frequency is much larger than the threshold frequency. This means that the transfer function can amplify any

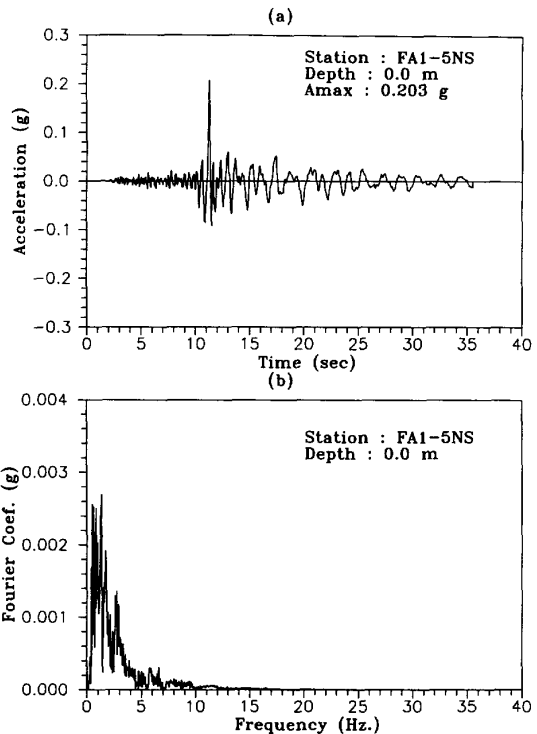


Fig. 13. The input motion of the multilayered case. (a) Time history. (b) Fourier coefficient spectrum.

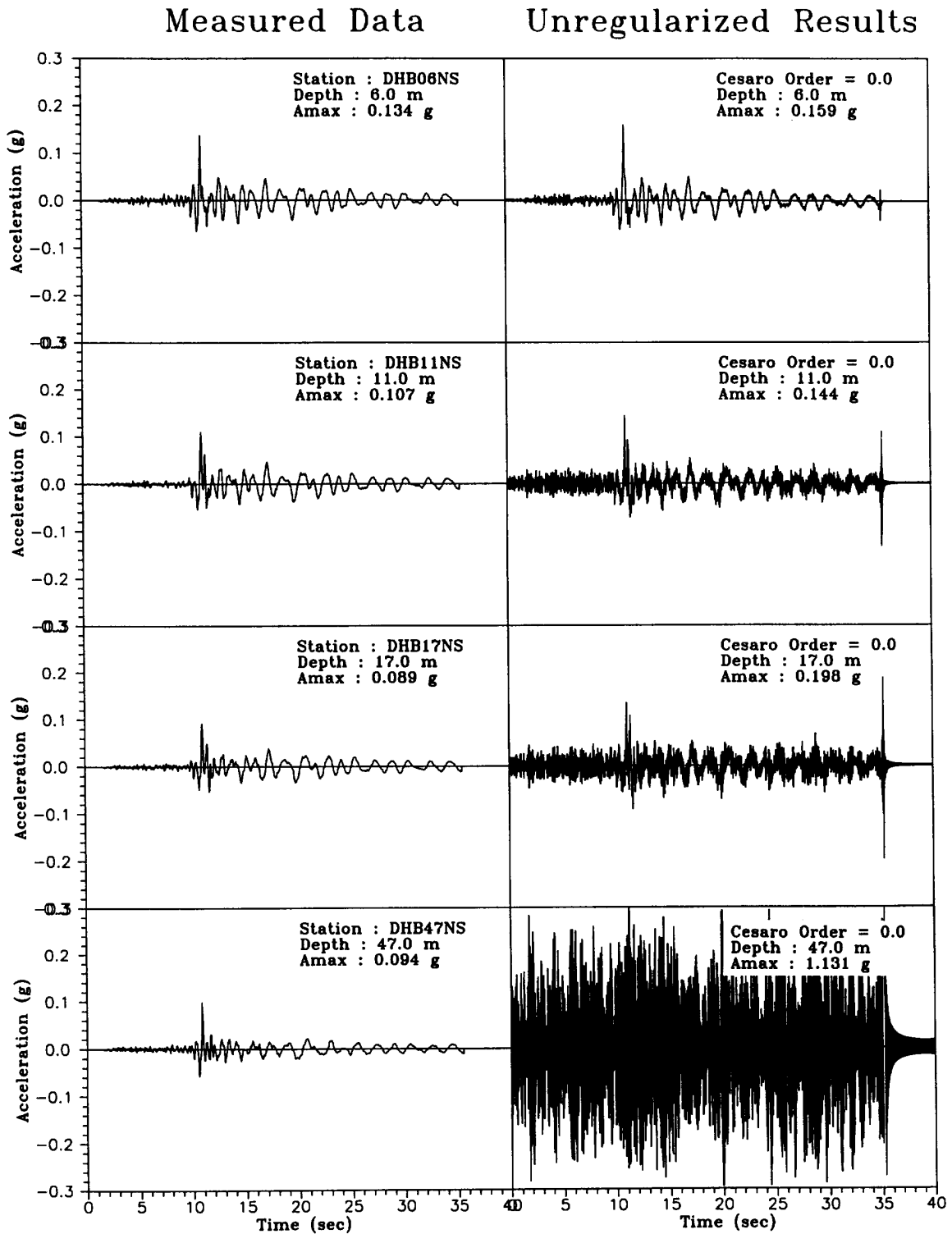


Fig. 14. Comparison of measured data and unregularized results. (a) Time history. (b) Fourier coefficient spectrum.

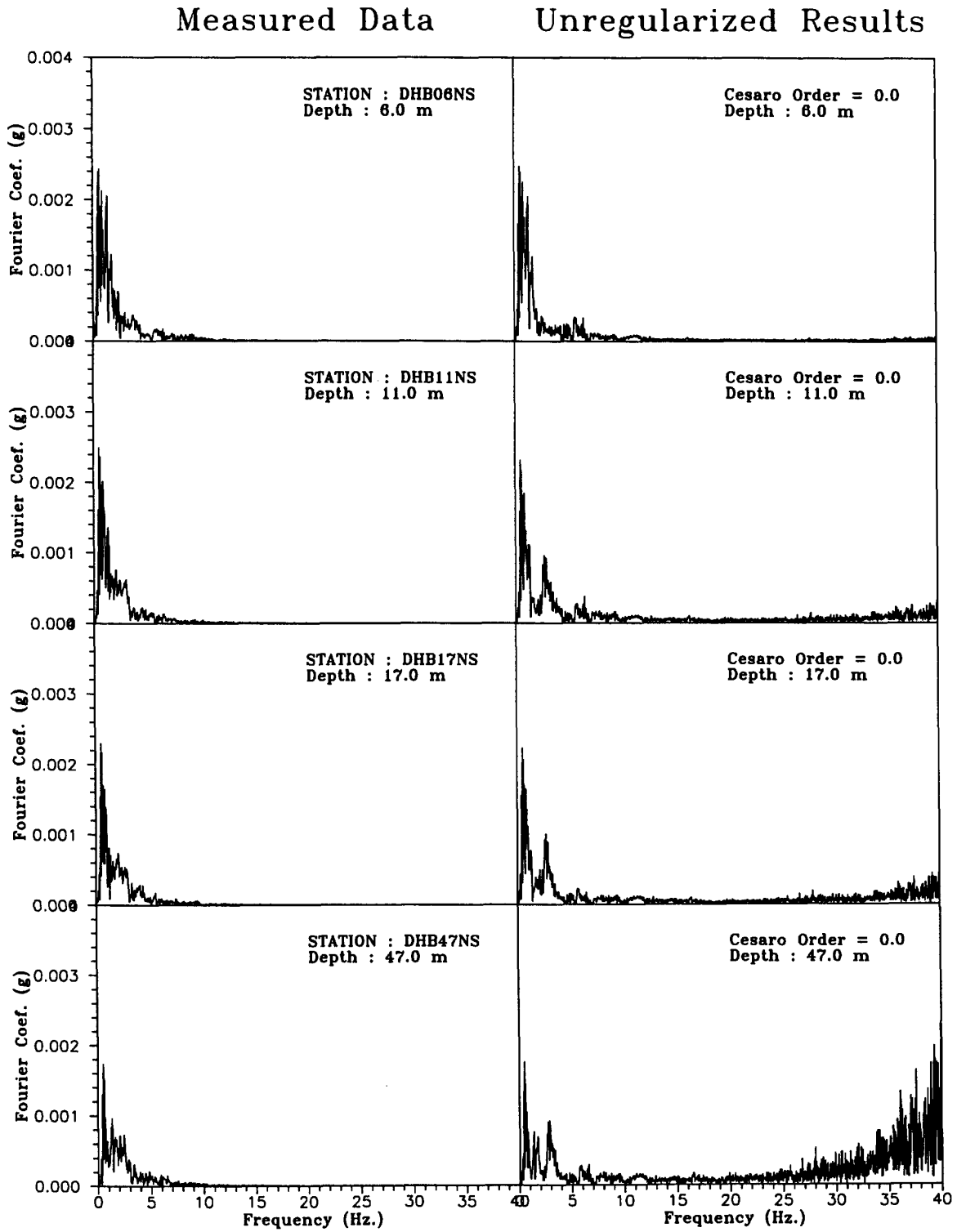


Fig. 14. Continued.

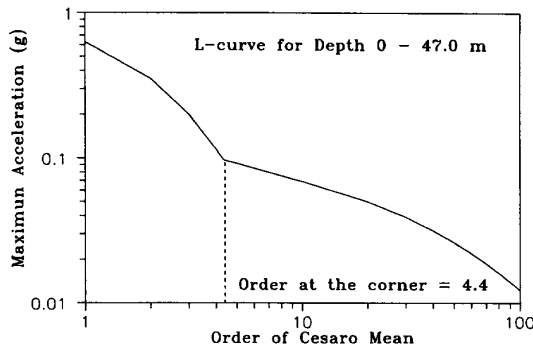


Fig. 15. The constructed L-curve of the multilayered case.

high frequency noise of the contaminated input motion in deconvolution analysis.

In practical solutions, very few downhole records are available. Therefore, deconvolution analyses are usually used to calculate underground motions. The problem of high frequency amplification can not be avoided in the analysis. The next section will introduce a new regularization method to overcome the difficulty of high frequency amplification in deconvolution analysis.

### 3. REGULARIZATION WITH THE CESÀRO MEAN TECHNIQUE

For the above mentioned ill-posed problem, regularization techniques, e.g. the Tikhonov method,<sup>6</sup> are often employed to transform the original problem into a well-posed one. The Tikhonov method can be used when the system is formulated in terms of convolution type; however, it will introduce a double integral in the formulation. To avoid a large number of calculations, the frequency domain approach is used in this paper, and hysteretic damping can be easily included. Therefore, we will propose a new regularization technique based on the theory of the Cesàro mean to regularize the ill-posed problem in the frequency domain. In the mathematical modelling for a physical problem, the series representation or integral representation for the solution is often assumed, and the governing equation in another domain can be equivalently obtained. Because some errors or the Dirac Delta function may be included in the solution, contaminated errors in the representation for solution will be present. In order to represent the solution more accurately, a regularization technique can reproduce the unknown solution more approximately. This is the reason why the Cesàro mean is related to the reproducing kernel (Fejèr kernel).<sup>12</sup>

The general Cesàro mean is defined as<sup>2-5,8</sup>

$$S_k = C(k, r) \left\{ \sum_{n=0}^k a_n \right\} \equiv \frac{C_{r-1}^{k+r-1} s_0 + C_{r-1}^{k+r-2} s_1 + \dots + C_{r-1}^r s_{k-1} + C_{r-1}^{r-1} s_k}{C_r^{k+r}} \quad (11)$$

where  $C(k, r)$  is the operator of the Cesàro mean of  $r$ th order,  $r$  is an integer,  $C_r^k = k!/(r!(k-r)!)$  and the partial sum is

$$s_k = \sum_{n=0}^k a_n(x, t). \quad (12)$$

The  $C(k, 1)$  mean reduces to the conventional Cesàro sum:

$$S_k = C(k, 1) \left\{ \sum_{n=0}^k a_n \right\} \equiv \frac{s_0 + s_1 + \dots + s_{k-1} + s_k}{k+1}. \quad (13)$$

For efficiency of computation, the  $s_i$  terms can be changed to  $a_i$  terms, and eqn (11) can be expressed as

$$S_k = C(k, 1) \left\{ \sum_{n=0}^k a_n \right\} \equiv \frac{1}{k+1} \sum_{n=0}^k (k-n+1) a_n. \quad (14)$$

Similarly, the  $C(k, 2)$  Cesàro mean is

$$\begin{aligned} S_k &= C(k, 2) \left\{ \sum_{n=0}^k a_n \right\} \\ &= \frac{C_1^{k+1} s_0 + C_1^k s_1 + C_1^{k-1} s_2 + \dots + C_1^2 s_{k-1} + C_1^1 s_k}{C_2^{k+2}} \\ &= \frac{(k+1)s_0 + ks_1 + \dots + 2s_{k-1} + s_k}{0.5(k+1)(k+2)} \end{aligned} \quad (15)$$

or, in terms of  $a_i$ ,

$$\begin{aligned} S_k &= C(k, 2) \left\{ \sum_{n=0}^k a_n \right\} \\ &\equiv \frac{1}{(k+1)(k+2)} \sum_{n=0}^k (k-n+1)(k-n+2) a_n. \end{aligned} \quad (16)$$

For the general integer order  $r$ , we have

$$S_k = C(k, r) \left\{ \sum_{n=0}^k a_n \right\} \equiv \sum_{n=0}^k \frac{(k)!(k+r-n)!}{(k-n)!(k+r)!} a_n. \quad (17)$$

Because the order of the Cesàro mean is the regularized parameter, fractional orders of the Cesàro mean are necessary to construct a complete L-curve, which will be mentioned in the following section. For the case of noninteger order, the Cesàro mean can be defined as

$$S_k \equiv C(k, r) \left\{ \sum_{n=1}^k a_n \right\} = \sum_{n=1}^k w_n^r a_n \quad (18)$$

in which the weight is represented by

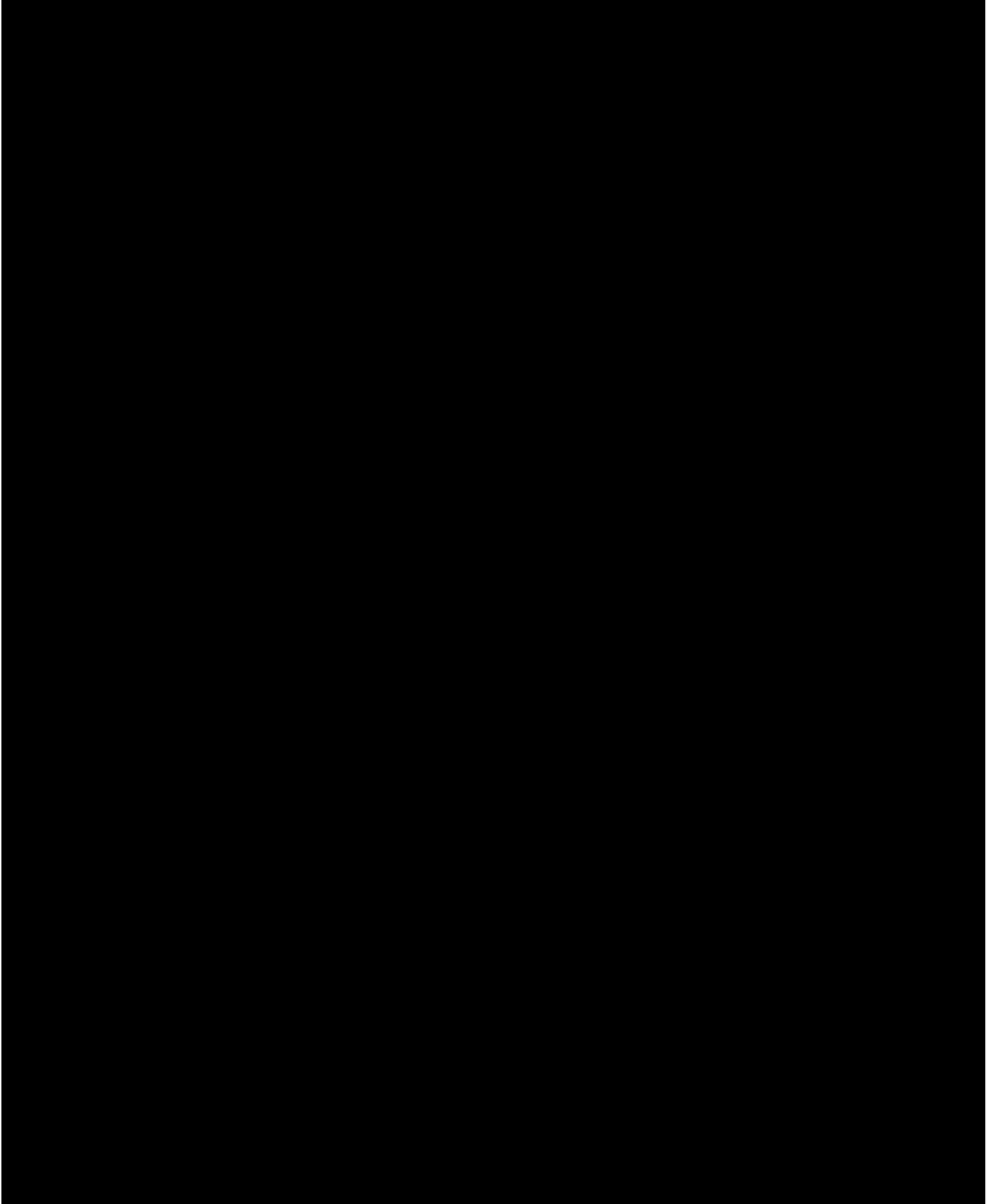
$$w_n^r = \frac{\Gamma(k+1)\Gamma(k+r-n+1)}{\Gamma(k-n+1)\Gamma(k+r+1)} \quad (19)$$

where  $\Gamma(x)$  is the Gamma function of  $x$ . Equation (19) can be reduced to the weight in eqn (17) where  $r$  is an



integer. To understand the effect of the weight for each basis  $a_n$ , the Cesàro means of order 1, 5, 10, 20, 100 are shown in Fig. 3. It is seen that the Cesàro mean has the physical meaning of a window function. The

$x$ -axis is the solution norm, and the  $y$ -axis is the residual norm. The former is the index of how smoothly the solution is treated, and the latter is the distance index between the predicted output and the real output. In the



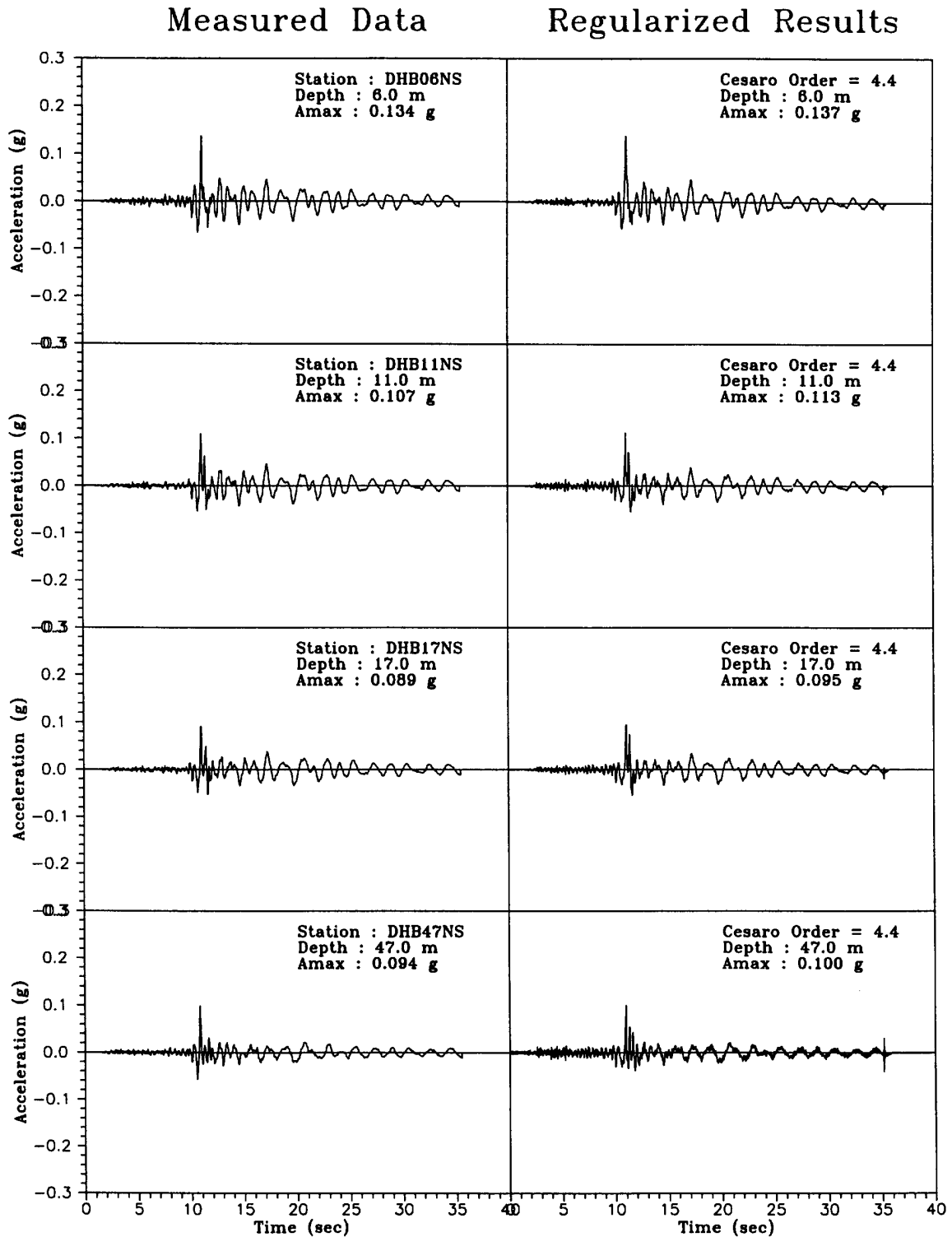


Fig. 16. Comparison of measured data and regularized results. (a) Time history. (b) Fourier coefficient spectrum.

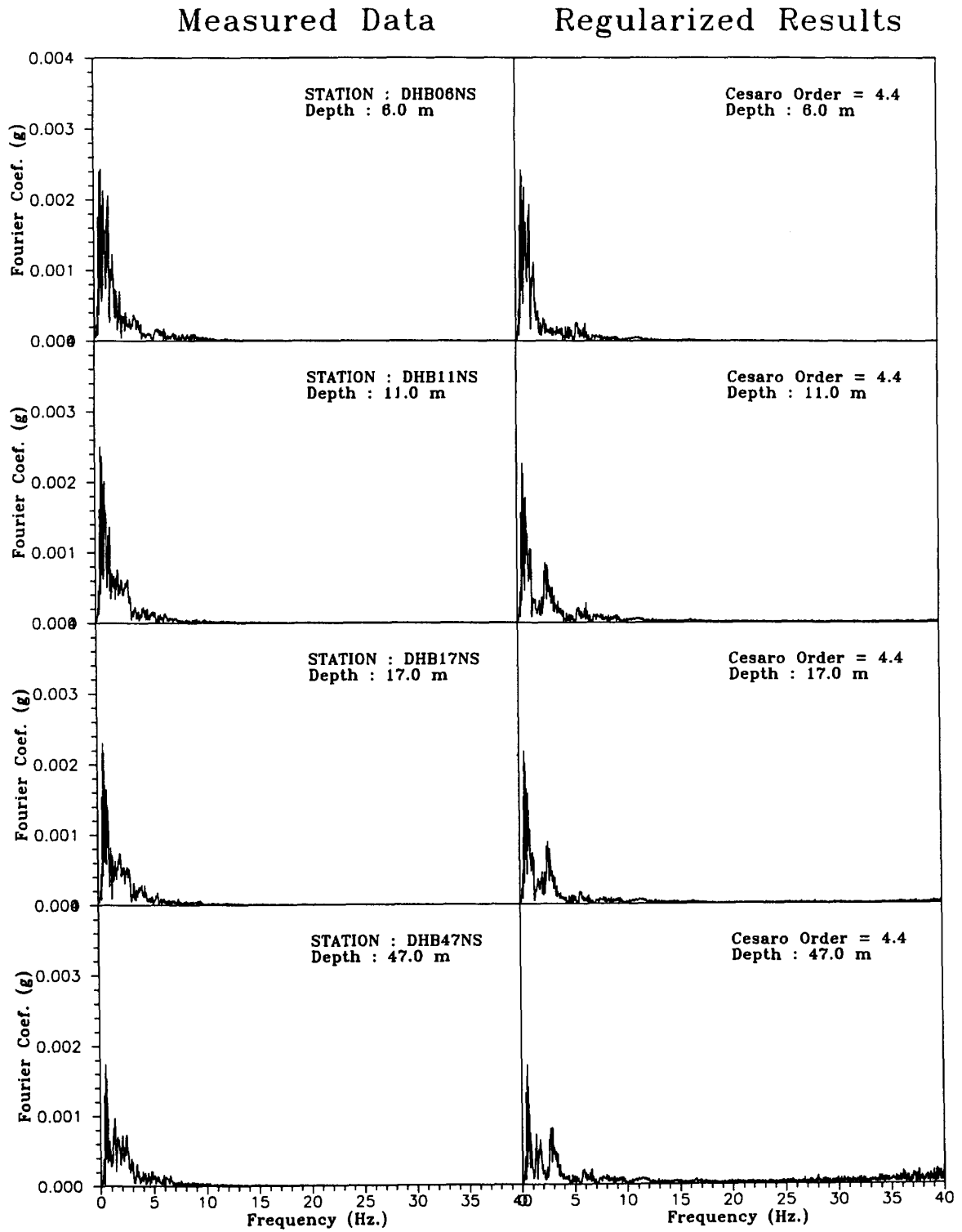


Fig. 16. Continued.

superimposed by 3% random error to simulate the probable errors in measurement.<sup>10</sup> The contaminated surface motion,  $\ddot{u}_g(t)$ , and its Fourier spectrum are shown in Fig. 7(a) and 7(b), respectively. To the naked eye, the difference between  $\ddot{u}_g(t)$  and  $\ddot{u}_g(t)$  can not be seen. When the contaminated surface motion,  $\ddot{u}_g(t)$ , is used for deconvolution analysis if no regularization is considered, the basement motion obtained is as shown in Fig. 8. Too much high frequency content is present, and the solution obtained is unrealistic.

When the above mentioned Cesàro mean regularization technique is applied in deconvolution analysis with contaminated surface motion,  $\ddot{u}_g(t)$ , we can construct the relationship between the maximum basement acceleration obtained and the order of the Cesàro mean, i.e. the L-curve, as shown in Fig. 9. In constructing the L-curve, the integer order of the Cesàro mean is used for the whole region at first, and the noninteger orders are then applied for the region near the corner of the L-curve to reduce the computational effort. As expected from a mathematical point of view, a corner is present in the L-curve. When the Cesàro order is at the left hand side of the corner, the maximum acceleration grows very fast and deviates very far from the accurate basement motion. If the Cesàro order is larger than the corner value, the lower frequency content of the deconvoluted motion will be over-decayed, and the maximum acceleration will become smaller. To find a compromise between the smoothing and perturbation errors, the corner of the L-curve is chosen as the optimal point. The appropriate order is 4.6. The original and regularized amplitude of transfer functions are shown in Fig. 10. It can be found that the low frequency region of the original transfer function is just slightly reduced by using the Cesàro window while the high frequency region of the transfer function has been suppressed very much. Therefore, the deconvolution result will be regularized to approximate the exact solution of  $\ddot{u}_b(t)$  as shown in Fig. 11. Comparing Fig. 11 with Fig. 5, the two motions are almost the same except for a small difference in high frequency content. The application of the Cesàro mean in conjunction with the L-curve for the deconvolution problem is satisfactory.

## 6. NUMERICAL EXAMPLE — MULTIPLE LAYER SOIL MODEL WITH MEASURED DATA

In this section, the deconvolution analysis of the multi-layered soil profile in Lotung, Taiwan, will be examined. The unregularized and regularized results computed by the SHAKE program will be compared with measured data from down-hole records from the LSST testing site in Lotung, Taiwan.

The soil profile of the farfield at the LSST site was simplified to four layers as shown in Fig. 12, and the soil

properties of shear wave velocities and damping ratios were deduced from the acceleration records measured by using the spectral ratio method in the study of Chen.<sup>1</sup> These properties represent the equivalent parameters in the earthquake of 20 May, 1986 due to the nonlinear behavior of the soils. Station FA1-5 is located on the ground surface, and the downhole array of DHB06, DHB11, DHB17 and DHB47 is arrayed below the ground surface at depth 6, 11, 17 and 47 m. The NS component of station FA1-5NS in the earthquake of 20 May, 1986 was selected to be input motion. The regularized and unregularized motions underground were compared with the measured data of down-hole stations for the same event.

The time history and Fourier spectrum of the FA1-5NS component are shown in Fig. 13. The wave form from Fig. 13(a) shows a major shock of about 0.2g at time 11.3 s and periodic vibration between time 20 and 35 s. Figure 13(b) shows that the major frequency contents are lower than 5 Hz, and that the minor frequency contents are spread over 5–20 Hz. There is only a small contribution for frequencies larger than 20 Hz. The time histories of the down-hole array are shown in the first column of Figs 14(a) and 16(a), the Fourier spectra are shown in the first column of Figs. 14(b) and 16(b), and the wave forms are similar to FA1-5NS in Fig. 13(a) with lower amplitude and lower frequency contents. This phenomenon indicates that the ground record is highly contaminated with noise, which might not be convoluted from the basement. Based on the measured data at FA1-5NS as input motion, both regularized and unregularized solutions of the down-hole array can be deconvoluted by the SHAKE program in conjunction with or without the proposed regularization technique.

The unregularized deconvoluted results are shown in the second column of Fig. 14. Figure 14(a) shows that tremendous errors occur in the motions at depths greater than 6 m. These errors come from high frequency contents as shown in Fig. 14(b). It shows that the frequency contents are similar to the measured data while the high frequency contents deviate greatly with increasing depth. The tendency in this case is the same as that found by Chen.<sup>1</sup> From the results of unregularized deconvolution analysis, the importance of the regularization technique is more obvious, and the results of regularized analysis are shown in the following.

The regularization technique is incorporated into the SHAKE program to modify the transfer function of deconvolution. The L-curve is constructed according to the max acceleration at the deepest station, DHB47, as the y axis. The L-curve is shown in Fig. 15, and the order at the corner of L-curve is 4.4. The regularized results using Cesàro order 4.4 are shown in the second column of Fig. 16(a) and 16(b). From Fig. 16(a), we can find that the wave form can be simulated satisfactorily in comparison with the measured data when the depth of calculation is not greater than 17 m. Although the

regularized results at station DHB47 are similar to the measured data including maximum acceleration and wave form, a few high frequency contents are still amplified as shown in Fig. 16(b). Comparing Fig. 16(b) with Fig. 14(b), we find that the high frequency contents have been suppressed by the Cesàro mean.

## 7. CONCLUSIONS

The Cesàro regularization technique presented in this paper, together with the L-curve, plays a role in determining the optimal window which can maintain the system characteristics and make the system insensitive to the contaminating noise. Therefore, the long standing abstrusity of determining the window by engineering judgement is solved by a theoretical window in conjunction with the L-curve. Two examples, a numerical case with artificial errors and a field case with data measured in Lotung, Taiwan, have been given to demonstrate the validity of the proposed method.

## ACKNOWLEDGEMENTS

The authors are grateful to Dr. Yang-Jye Lee for valuable discussions.

## REFERENCES

1. Chen, L. Y. Vertical propagation of seismic waves in soil layers. Master Thesis, 1988. Department of Civil Engineering, National Taiwan University.
2. Hong, H.-K. & Chen, J. T. On the dual integral representation and its application to vibration problems. In eds C. A. Brebbia and J. J. Rencis, *Proc. 15th Int. Conf. on BEM in Engineering*, Worcester, Massachusetts, 1993, pp. 377–392.
3. Chen, J. T. & Hong, H.-K. On the relations of hyper-singular kernel and divergent series in heat conduction problem using BEM. In *Boundary Element Technology VIII*, eds H. Pina and C. A. Brebbia, Computational Mechanics Publication, Southampton, 1993, pp. 115–124.
4. Yeh, C. S., Hong, H.-K. & Chen, J. T. The application of dual integral representation on the shear beam subjected to random excitations, *Proc. 16th National Conf. Theoretical and Applied Mechanics*, Keelung, Taiwan (1992) (in Chinese), pp. 767–774.
5. Chen, J. T., Hong, H.-K., Yeh, C. S. & Chyuan, S. W. Integral representations and regularizations for divergent series solution of a beam subjected to multi-support motion, in revised version, *Earthq. Engng Struct. Dynamics*, 1995.
6. Tikhonov, A. N. Regularization of incorrectly posed problems. *Soviet Math. Dokl.*, 1963, **4**, 1624–1627.
7. Schnabel, P. B., Lysmer, J. & Seed, H. B. SHAKE — A computer program for earthquake response analysis of horizontally layered sites. EERC Report-72/12, 1972 University of California.
8. Hardy, G. H. *Divergent Series*, (1949) London, Oxford University Press.
9. Hansen, Per Christian, Analysis of discrete ill-posed problems by means of the L-curve. *SIAM Rev.*, 1992, **34**(4), 561–580.
10. Chen, L. Y., Lee, Y. J. and Chen, C. H. Application of Cesàro mean and the concept of threshold frequency for ground motion deconvolution analysis. *J. Chinese Inst. Civ. Hydraul. Engng*, 1994 (in Chinese).
11. Radziuk, J. The numerical solution from measurement data of linear integral equations of first kind. *Int. J. Num. Meth. Engr.*, 1977, **11**, 729–740.
12. Korner, T. W. *Fourier Analysis*, 1988, Cambridge University Press, Cambridge.